

## Technical Specifications

<b>Power supply</b>	21 ... 25.2VDC
<b>Power consumption</b>	Standby: <100mW Warm white: max. 9.4W
<b>Dimming range</b>	0 ... 100%
<b>Ambient temperature</b>	0 ... 55°C / 32 ... 131°F
<b>Humidity</b>	max. 95% r.H. (non condensing)
<b>PWM frequency</b>	200Hz
<b>Energy efficiency (EU) 2017/1369</b>	F
<b>Colour temperature</b>	typ. 3000k (warm white)
<b>Luminous flux</b>	typ. 804lm (warm white)
<b>Colour rendering index (CRI)</b>	min. 80
<b>Beam angle</b>	60°
<b>Unified glare rating (UGR)</b>	<19
<b>Dimensions</b>	D = 80mm, H = 70mm
<b>Safety rating</b>	IP20
<b>Maintenance &amp; Cleaning</b>	This device is free of maintenance and may only be cleaned with a dry cloth.

# LOXONE

# LOXONE

## Need Help?

[loxone.com/support](https://loxone.com/support)

Loxone Electronics GmbH  
Smart Home 1  
4154 Kollerschlag  
Austria

[loxone.com](https://loxone.com)

V010322



## LED Ceiling Spot WW Tree

Part No: 100238 (White)  
Part No: 100281 (Anthracite)

## About the product

The Loxone LED Ceiling Spot WW Tree is a downlight with warm white light outputs. It only works in combination with the Loxone Tree Extension.

## Installation & electrical connection

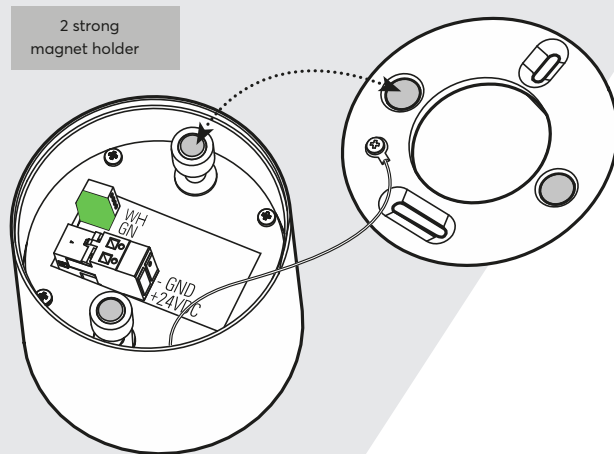
The installation of this device has to be carried out by a qualified person. The device has to be fitted in accordance with building regulations for electrical and fire safety. If the device is not installed according to manufacturers guidelines the protection of the device may be affected.

## Loxone Tree

<b>Wire cross-section</b>	0.25 ... 0.8mm <sup>2</sup> / AWG23 ... 18
<b>Stripping length</b>	5mm / 0.2"
<b>Temperature resistance</b>	-40 ... 105°C / -40 ... 221°F

## Power supply

<b>Wire cross-section</b>	0.75 ... 2.5mm <sup>2</sup> / AWG18 ... 13
<b>Stripping length</b>	5mm / 0.2"
<b>Temperature resistance</b>	min. 80°C / 176°F for IEC, min. 75°C / 167°F for UL



This folder is a part of the product!

DRY LOCATIONS ONLY • POUR EMPLACEMENTS SECS SEULEMENT •  
CLASS 2 INPUT ONLY • ENTRÉE DE CLASSE 2 UNIQUEMENT



For additional information, declaration of conformity,  
visit [www.loxone.com/help/ledceilingspot](http://www.loxone.com/help/ledceilingspot)