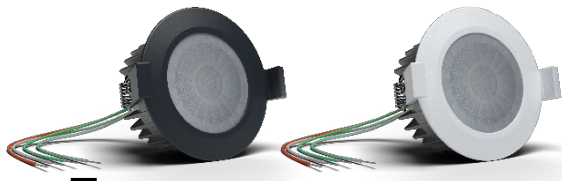


Datasheet



Flush-mounted Presence Sensor Tree

Part No: 100466, 100467

About the product

The Loxone Presence Sensor Tree is used to detect presence, motion and brightness in a room.

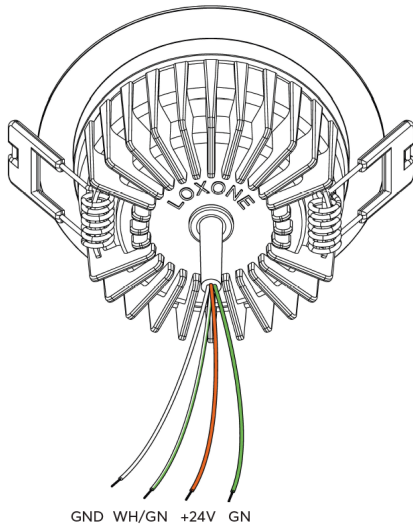
Electrical Data

Power supply	9 ... 30VDC
Power consumption	typ. 210mW
Power loss	max. 250mW
Ambient temperature	-25 ... 70°C / -13 ... 158°F
Humidity	max. 95% r.H. (non condensing)
Motion detection	passive infrared sensor
Motion detection range	8m / 26.25ft (at height of 3m / 9.84ft)
Recommended installation height	2.5 ... 3.5m / 8.2 ... 11.5ft
Detection angle vertical	110°
Detection angle horizontal	360°
Measuring range of brightness sensor	0 ... 83000lx
Acoustig detection	60Hz ... 20kHz, mono

Connections

	Connection Cable	Connection Terminals
Wire cross-section	0.75mm ² / AWG18	0.14 ... 4mm ² / AWG24 ... 12
Stripping length	11mm / 0.43"	11mm / 0.43"
Temperature resistance	max. 70°C / 158°F	max. 85°C / 185°F
Cable length	200mm / 7.87"	-
Orange / White	+ 24VDC / GND	-
Green / White	Loxone Tree	-

Connection Diagram

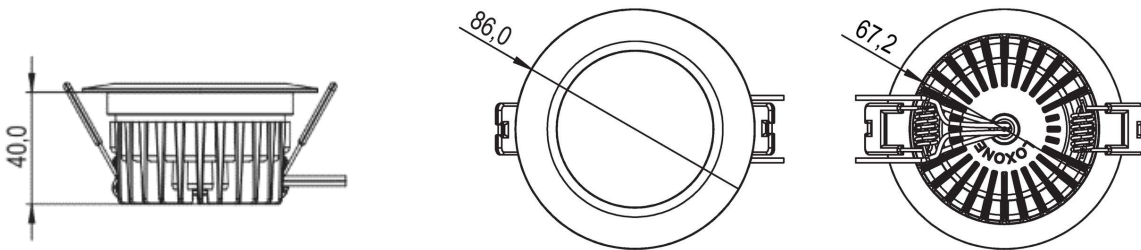


Product Characteristics

Colours	Anthracite: RAL7021 - Part No. 100467 White: RAL9003 - Part No. 100466
Finish	Matte



Weight & Dimensions

Net weight	150g
Total weight	250g
Product dimensions	Outer diameter of bezel: 86mm (3.39") Installation depth: 40mm (1.57") Hole diameter: 68 ... 72mm (2.68 ... 2.83")



Pack size	98x90x33mm / 3.86x3.54x1.30" (LxWxH)
-----------	--------------------------------------

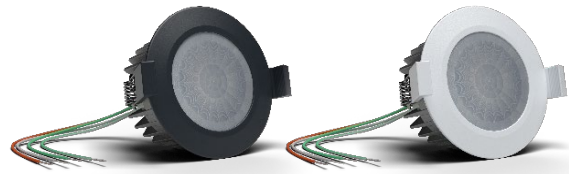
Certifications & Standards

Safety rating	IP20
Certifications	UL 62368-1 CSA C22.2#62368-1 Fire Rated UL263 & BS 476-20 60 mins
	
	 RECOGNIZED COMPONENT C LISTED US Intertek

Installation must be carried out by a qualified electrician in accordance with the relevant regulations.

Published by
Loxone Electronics GmbH
Smart Home 1
4154 Kollerschlag
Austria
Tel: +43 7287 7070-0
loxone.com

Datenblatt



Präsenzmelder Deckeneinbau Tree

Art. Nr. 100466, 100467

Information zum Produkt

Der Loxone Präsenzmelder Tree dient zur Erfassung von Präsenz, Bewegung und Helligkeit in einem Raum.

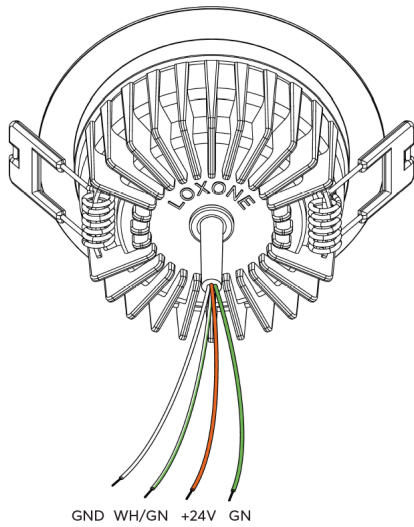
Elektrische Daten

Spannungsversorgung	9 ... 30VDC
Leistungsaufnahme	typ. 210mW
Verlustleistung	max. 250mW
Umgebungstemperatur	-25 ... 70°C / -13 ... 158°F
Luftfeuchtigkeit	max. 95% r.H. (nicht kondensierend)
Bewegungserkennung	passiver Infrarotsensor
Reichweite der Bewegungserkennung	8m / 26.25ft (in 3m / 9.84ft Höhe)
Empfohlene Installationshöhe	2,5 ... 3,5m / 8,2 ... 11,5ft
Erfassungswinkel vertikal	110°
Erfassungswinkel horizontal	360°
Messbereich Helligkeitssensor	0 ... 83000lx
Akustikerkennung	60Hz ... 20kHz, mono

Anschlüsse

	Anschlussleitung	Anschlussklemmen
Leiterquerschnitt	0,75mm ² / AWG18	0,14 ... 4mm ² / AWG24 ... 12
Abisolierlänge	11mm / 0.43"	11mm / 0,43"
Temperaturbeständigkeit	max. 70°C / 158°F	max. 85°C / 185°F
Kabellänge	200mm / 7,87"	-
Orange / Weiß	+ 24VDC / GND	-
Grün / Weiß	Loxone Tree	-

Anschlussplan

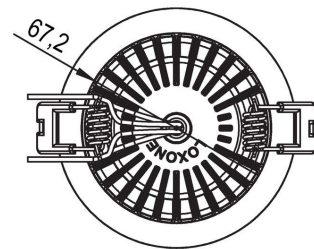
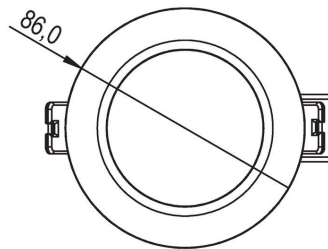
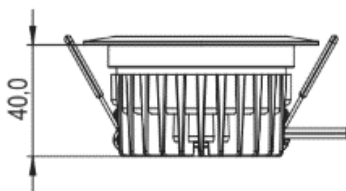


Produkteigenschaften

Farbe	Anthrazit: RAL7021 - Art. Nr. 100467 Weiß: RAL9003 - Art. Nr. 100466
Glanzgrad	Matt

Gewicht & Abmessungen

Nettogewicht	150g
Bruttogewicht	250g
Produktmaße	Außendurchmesser des Frontrings: 86mm (3,39") Einbautiefe: 40mm (1,57") Lochdurchmesser: 68 ... 72mm (2,68 ... 2,83")



Packmaß	98x90x33mm / 3,86x3,54x1,30" (LxBxH)
---------	--------------------------------------

LOXONE

Zertifizierungen & Standards

Schutzart

IP20

Zertifizierungen

UL 62368-1
CSA C22.2#62368-1
Brandschutzklasse UL263 & BS 476-20
60 Min.



Die Installation muss nach den einschlägigen Vorschriften durch eine Elektrofachkraft erfolgen.

Veröffentlicht von
Loxone Electronics GmbH

Smart Home 1
4154 Kollerschlag
Austria
Tel: +43 7287 7070-0
loxone.com