

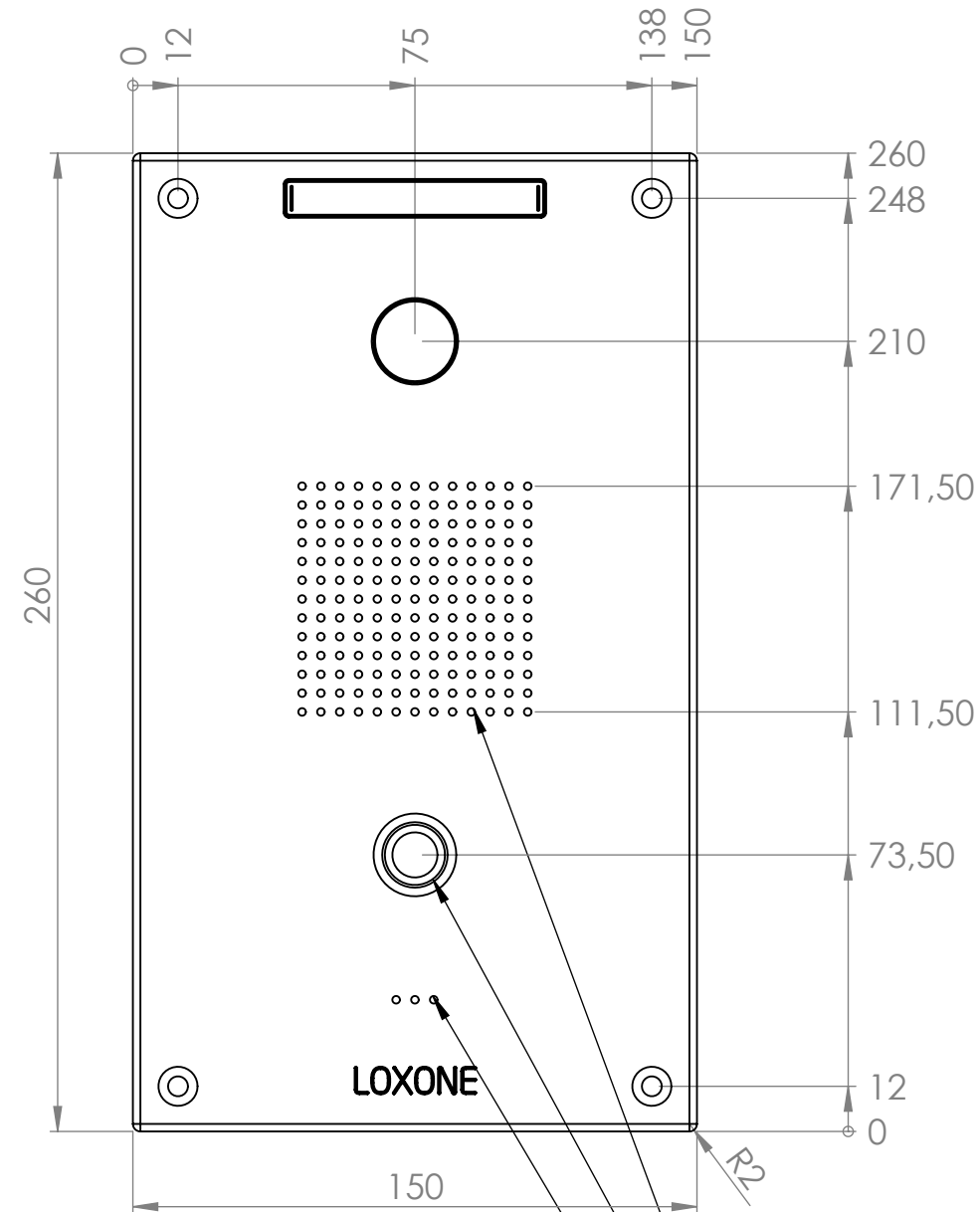
Alle Rechte ausdrücklich vorbehalten. Vervielfältigung oder
Mithaltung an Dritte, gleichgültig in welcher Form, ist ohne
schriftliche Genehmigung des Eigentümers nicht gestattet.

All rights strictly reserved. Reproduction or issue
to third parties in any form whatever is not permitted
without written authority from the proprietors.

Lettering master
(P-Touch 8 mm) behind
a removable acrylic cover.

To open the cover:
Press on the side and push
outwards.

High-quality front panel,
made of aluminium, solid,
gloss-polished surface,
anodized.

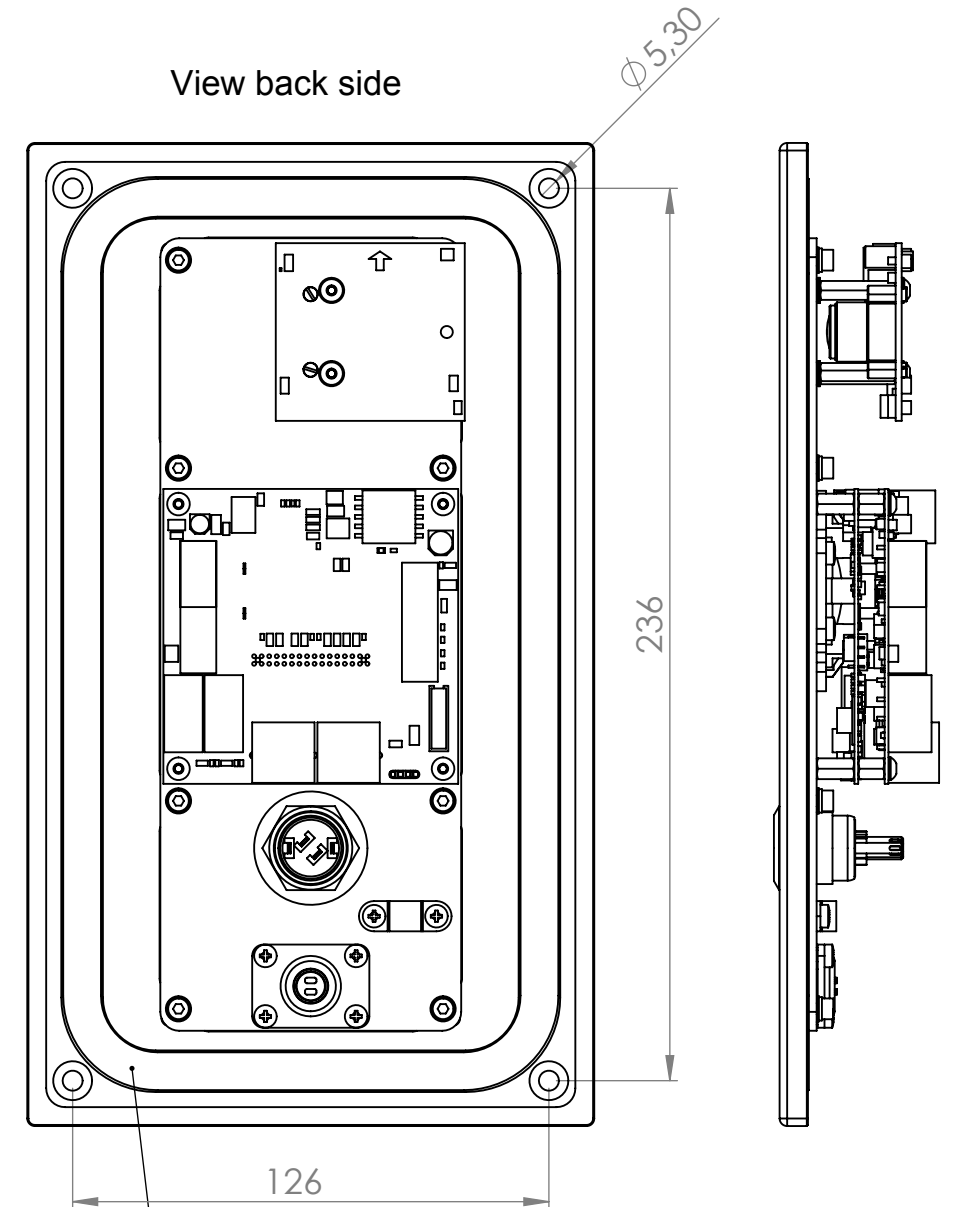


Speaker

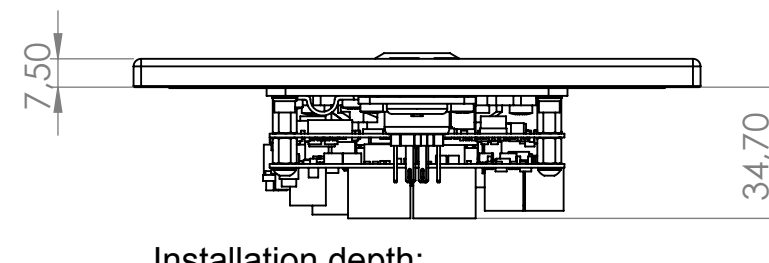
Call button with integrated
2-coloured LED display

Microphone

View back side



Sealing with foam rubber tape 10mm
Circular against flush-mounted or surface-mounted
box or other panel cut-out



Installation depth:
At least 38 mm depth required

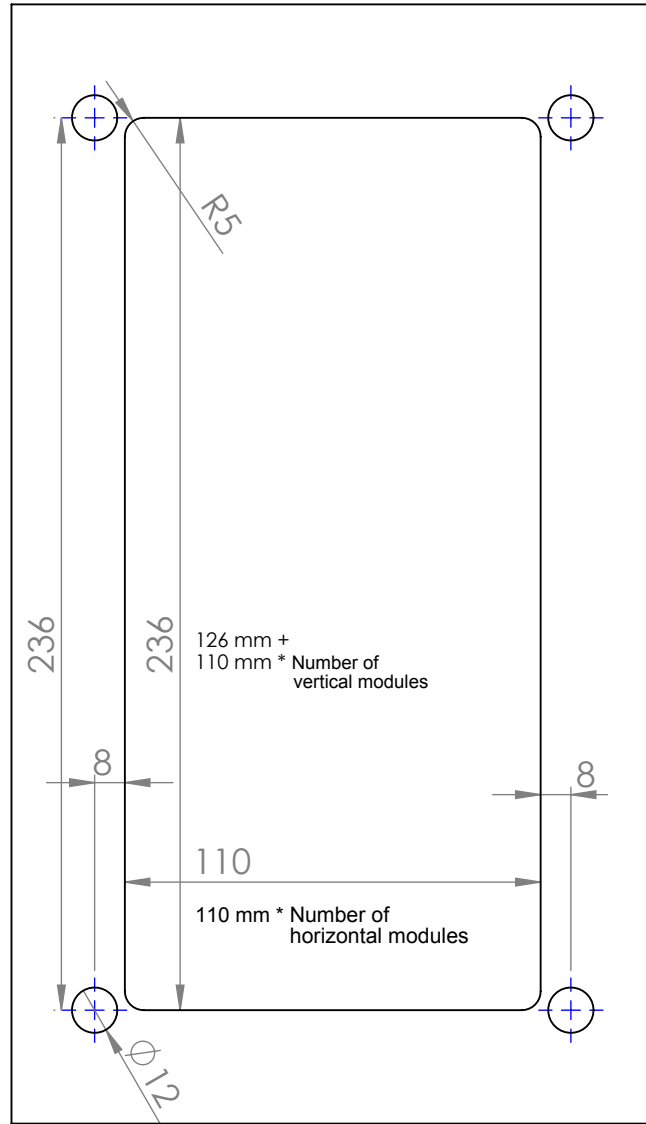
LOXONE Loxone Electronics GmbH				Bezeichnung: <i>Loxone Intercom</i>	
Datum	06.06.2013	06.06.2013	06.06.2013	Artikel Nummer	
Name	Ba	Ba	Ba	200093	
	erstellt	geprüft	Freigabe	Letzte Änderung: 22.10.2013	Durch: seifert
				Bl.	1/3

A

B

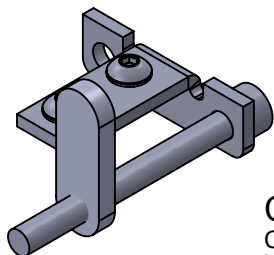
C

D



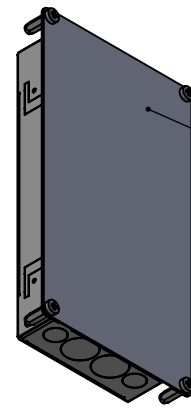
Drilling template for wall finishing

- For chiselling: 45 mm depth
- For cavity wall installation: wall thicknesses
from 6 to 25 mm possible with optional
cavity wall mounting kit 33-1503



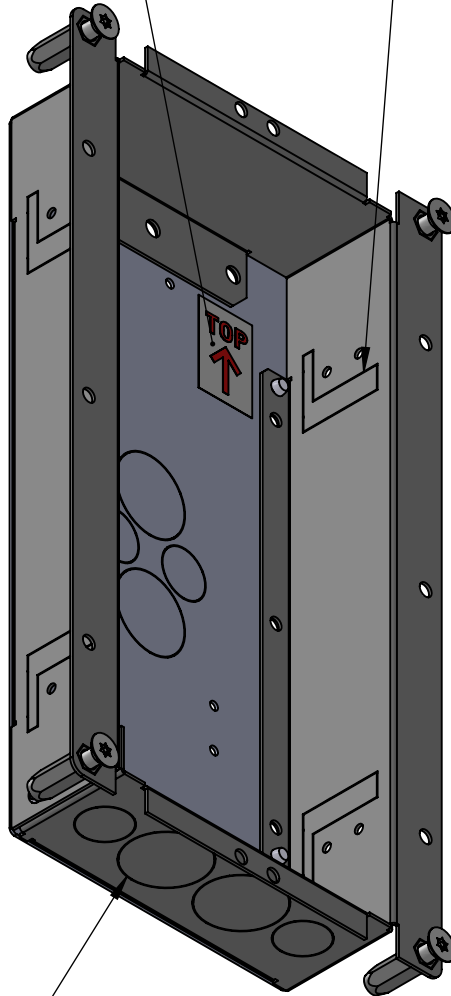
Cavity wall mounting kit

Consists of 4 sets to brace the flush-mounted
box from the back against a plaster board
or a front panel.
Delivery is optional upon request.



Protective cover:
The flush-mounted box is
delivered with a protective cover.
It protects the contact surface and
already completed work before
the subsequent plasterwork.
Is removed before the intercom
is installed.

Label for identification of
mounting position

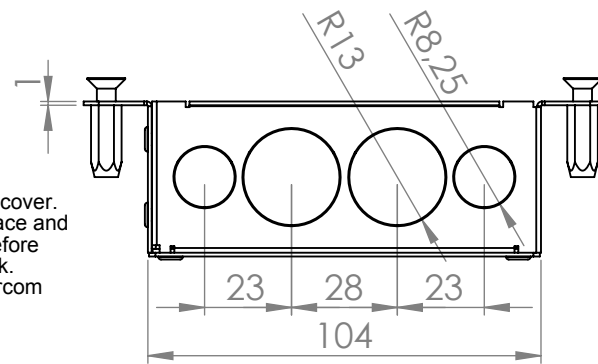


All breakouts for cable entry are closed and
designed as predetermined breaking points.

To open the breaking point, a flat screwdriver
is applied at the rim and the breakthrough is
made by a hammer stroke.

Two cable entries 16.5 mm and 26 mm respectively
at the bottom and the back.

Break out the tabs before mounting
the cavity wall mounting kits



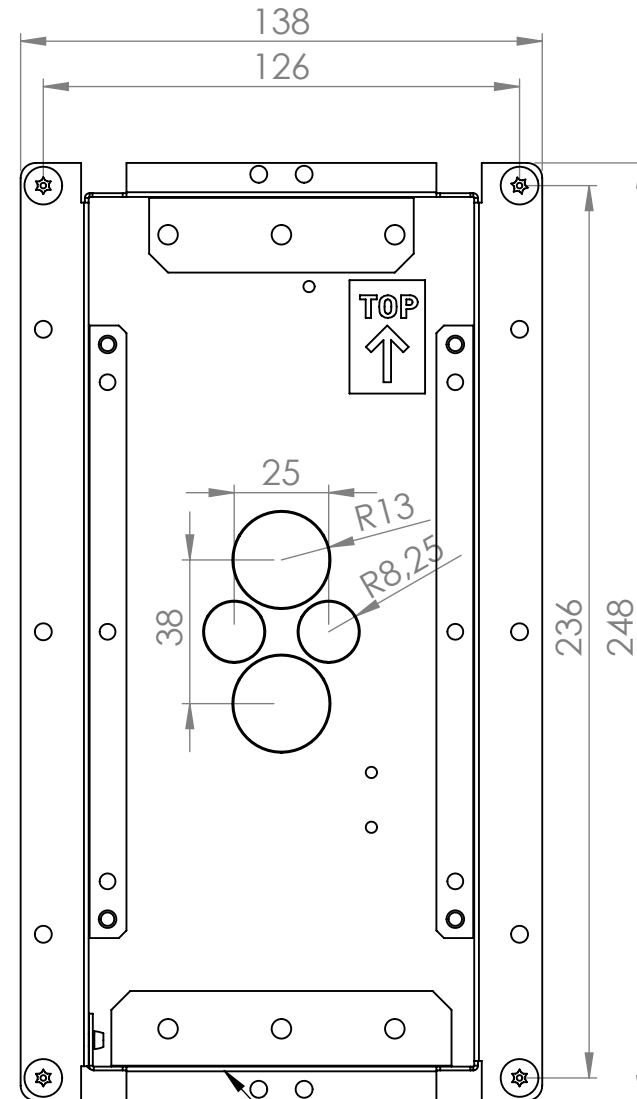
Front edge of sheet metal

Installation Instructions:

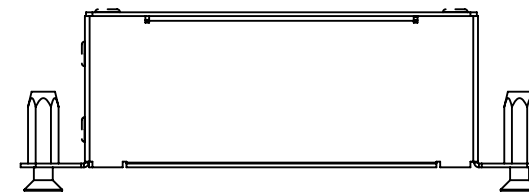
Rear side of the bearing surface is to be set at least flush with
the final plastering. (Mounting on existing plastered surfaces is possible).
The 1.0 mm thick sheet metal will be covered by the mounting frame (FB).
The frame can alternatively also be flush-plastered with the front of the sheet metal.

Sealing by outdoor installation:

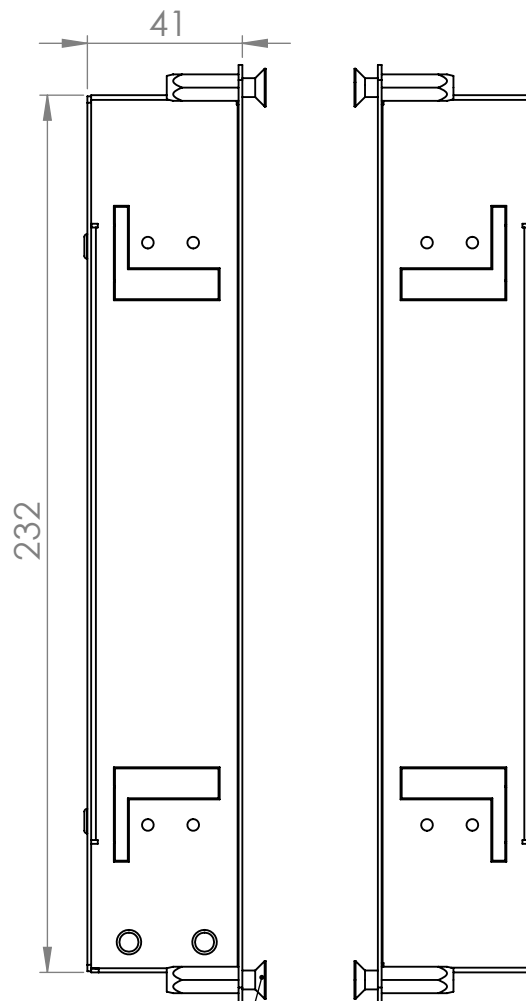
Around and on the back, the front edge of the sheet metal is to be sealed with acrylic
against the plaster surface. The acrylic sealing must be applied that no moisture can
get in between the flush-mounted box and the wall into the mounting space.
Additionally, the acrylic must be smoothed in a way that the foamed rubber seal of
the mounting frame (FB) is resting on an even surface and no moisture can get in
between the foamed rubber seal and the flush-mounted box through hollow spaces.



Cable outlet
at the bottom!



For wall installation is recommended that the
flush-mounted box is bolted together with
the underlying wall construction through open
holes in the rear panel.



4 screws for the mounting of the
video intercom are included in the
delivery of the flush-mounted box.

LOXONE				Bezeichnung: Intercom Flush-Mount Box		
Loxone Electronics GmbH						
Datum	06.06.2013	06.06.2013	06.06.2013	Artikel Nummer		
Name	Ba	Ba	Ba	200094		
	erstellt	geprüft	Freigabe	Letzte Änderung: 22.10.2013	Durch: seifert	Bl. 2/3

Alle Rechte ausdrücklich vorbehalten. Vervielfältigung oder
Nutzung an Dritte, gleichgültig in welcher Form, ist ohne
schriftliche Genehmigung des Eigentümers nicht gestattet.



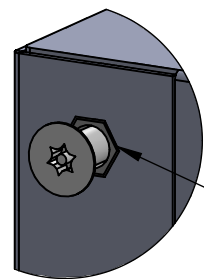
All rights strictly reserved. Reproduction or issue
to third parties in any form whatever is not permitted
without written authority from the proprietors.

A

B

C

D

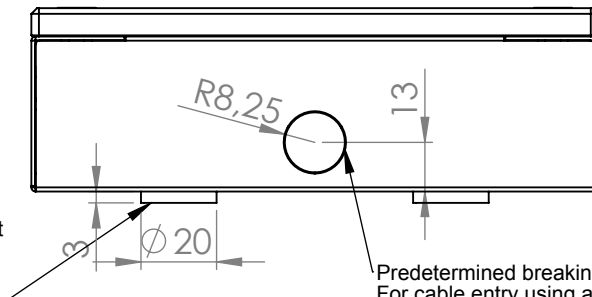


Hexagonal press-in thread:

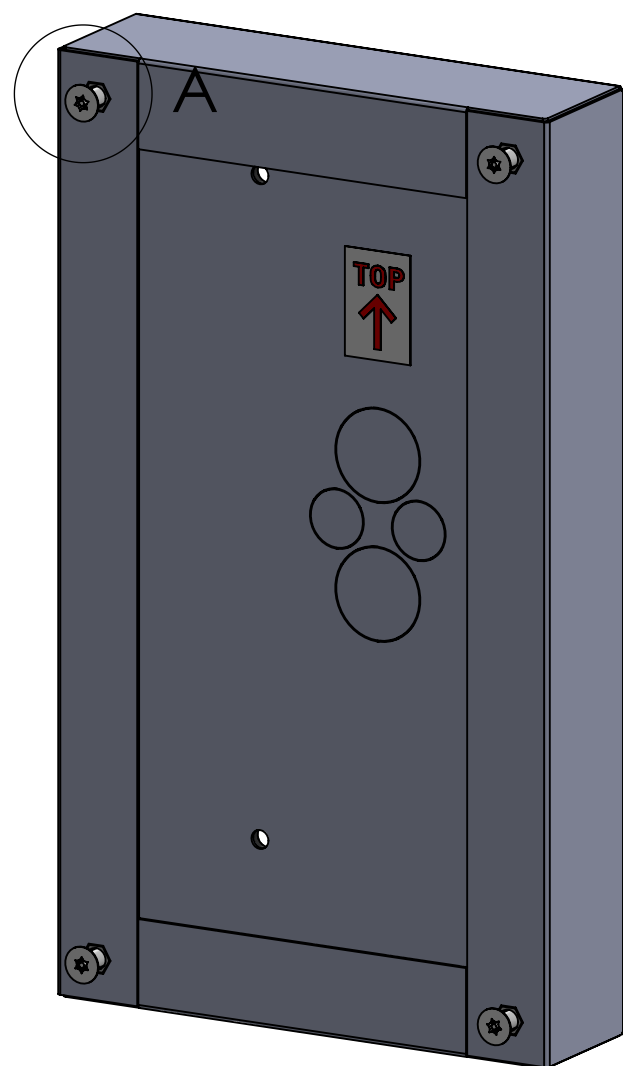
These have a higher resistance to rotation forces
and allow mounting of the screws using a cordless
screwdriver with limited torque.



4 rubber rings for height
adjustment included
in delivery

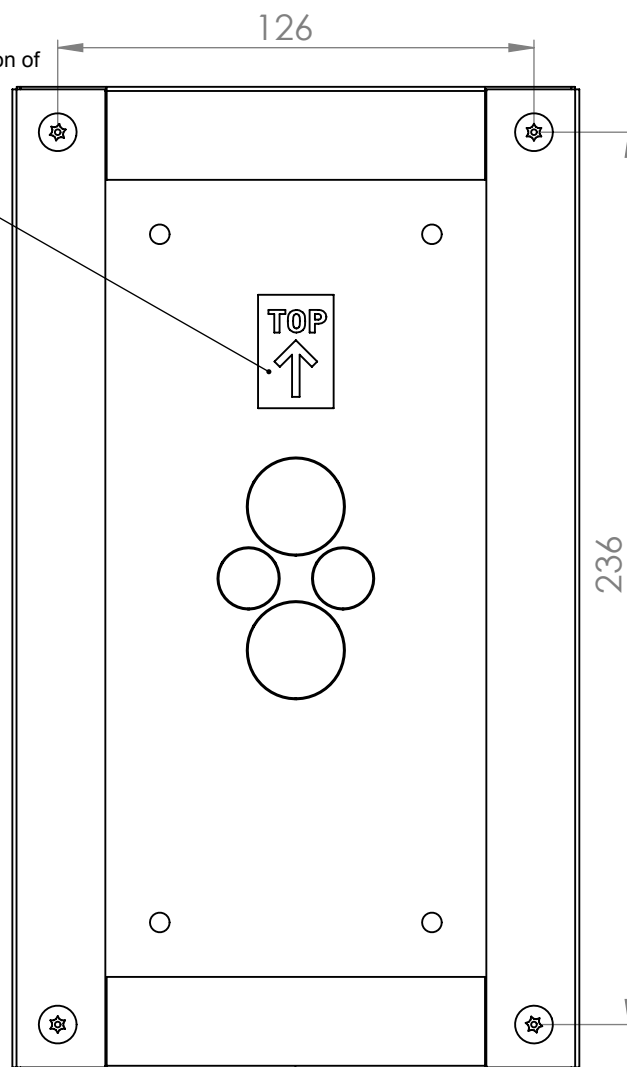


Predetermined breaking point:
For cable entry using an on-wall cable
duct guiding fed from the bottom



Surface-mount box in colour RAL9006,
white aluminium matt,
4 M5x16 torx screws with pin, set of dowels with screws,
4 rubber rings 3x20 are included in the delivery

Label for identification of
mounting direction



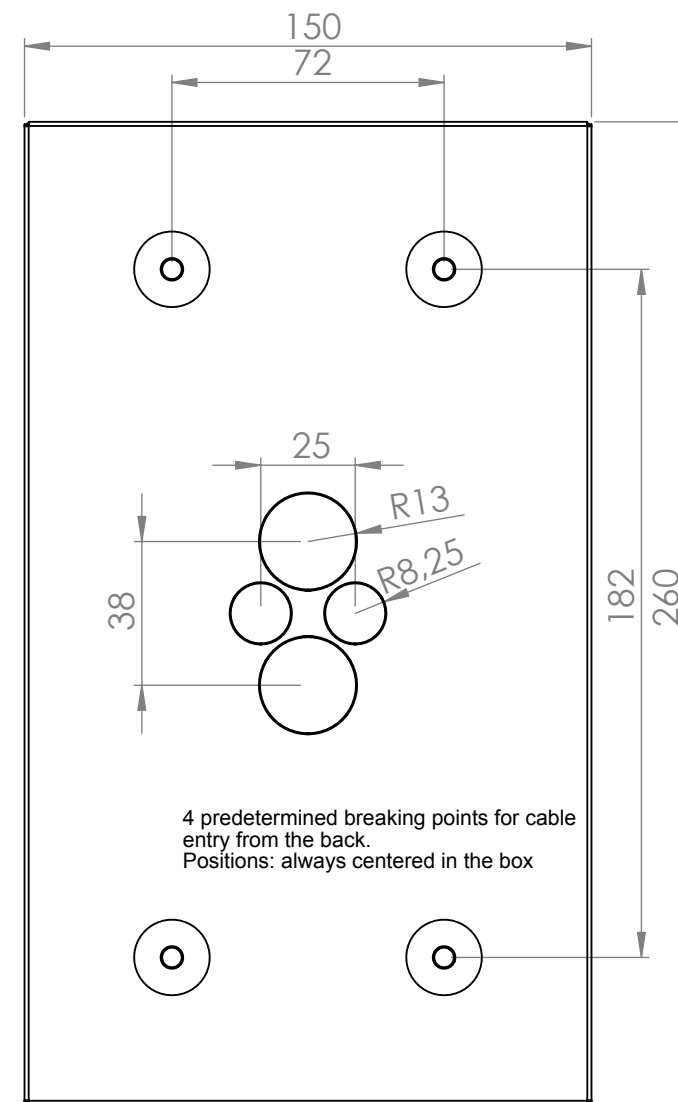
Predetermined breaking point at the bottom

All breakouts for cable entry are closed and
designed as predetermined breaking points.

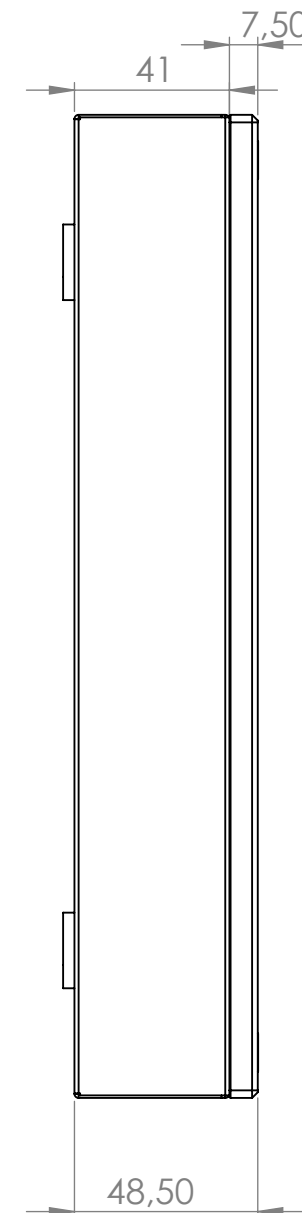
To open the breaking point, a flat screwdriver
is applied at the rim and the breakthrough is
made by a hammer stroke.

Installation Instructions:

The on-wall box is to be mounted on a plane wall
with 4 screws and 4 dowels (included in delivery).
For outdoor use, be aware of using sufficient sealing of the bolting.
The appliance of acrylic/silicone is recommended between dowels and on-wall housing.
Similarly, the cable routing must be protected against moisture.
For mounting on uneven walls, 4 rubber rings 3x20 mm are supplied.
Wall tolerances up to 2 mm can be compensated.



4 predetermined breaking points for cable
entry from the back.
Positions: always centered in the box



LOXONE				Bezeichnung: Intercom Surface-Mount Box		
Loxone Electronics GmbH						
Datum	06.06.2013	06.06.2013	06.06.2013	Artikel Nummer		
Name	Ba	Ba	Ba	200095		
	erstellt	geprüft	Freigabe	Letzte Änderung: 22.10.2013	Durch: seifert	Bl. 3/3