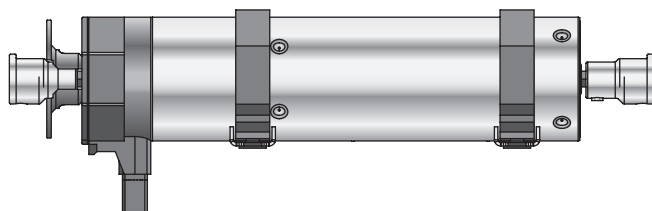


GEIGER
Antriebstechnik
LOXONE

Motor for Venetian blinds:

GEIGER GJ56.. AIR (GJ56.. F03)

for Venetian blinds



EN

**Original assembly and
operating instructions**

EN

Index

1. General information	2
2. Guarantee.....	2
3. Intended use	3
4. Safety instructions	3
5. Safety instructions for assembly	3
6. Assembly note	4
7. Installation instructions	5
8. Information for the specialist electrician	7
9. Operating mode of the GEIGER GJ56.. AIR	8
10. Connection to the Loxone Miniserver	9
11. What to do if... ..	10
12. Declaration of conformity.....	11
13. Technical data.....	12
14. Maintenance.....	12
15. Notes on waste disposal	12

EN

1. General information

Dear customer,

By purchasing a GEIGER motor you have decided on a quality product from GEIGER.

Thank you very much for your decision and the confidence placed in us.

Before you put this drive into operation please observe the following safety instructions. It serves for the prevention of danger and for the avoidance of personal injury and damage to property.

The installation and operating instructions contain important information for the installer, the specialist electrician and the user. Please pass on these instructions if you transfer the product. These instructions should be kept by the user.

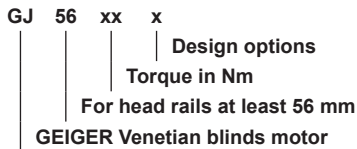
2. Guarantee

In the case of incorrect installation contrary to the installation and operating instructions and/or constructional modification, the legal and contractual guarantee for property damage and product liability lapses.

3. Intended use

The motors of the model range **GJ56.. F03** with electronic end stop are designed exclusively for the operation of Venetian blinds.

The motors may not be used for the operation of roller grilles, garage doors, furniture and lifting tools.



4. Safety instructions



ATTENTION: Important safety instructions. For personal safety, it is important to follow these instructions. Please keep these instructions for future reference.

- ▶ Do not allow children to play with stationary controls. Keep remote controls away from children.
- ▶ The installation is to be checked regularly for defective balance, signs of wear or damaged cables and springs, if relevant.
- ▶ Do observe the moving sun protection system and keep persons away until it has closed completely.
- ▶ When operating the manual release with the sun protection system open, please be cautious as it can fall down quickly if springs or tapes wear off or are broken.
- ▶ Do not operate the device if operations such as, for example, window cleaning are to be carried out in the vicinity.
- ▶ Disconnect the automatic controlled device from the mains power supply if operations such as, for example, window cleaning are being carried out in the vicinity.
- ▶ During operation observe the danger zone.
- ▶ Do not use the installation if people or objects are in the danger zone.
- ▶ Urgently shut down damaged installations until repair.
- ▶ Unconditionally shut down the unit during maintenance and cleaning operations.
- ▶ Pinching and shearing points are to be avoided and must be secured.
- ▶ This appliance can be used by children aged 8 and above and persons whose physical, sensorial or mental capacities are impaired, or who have no experience or know-how if they have been supervised or been given instructions on the use of the appliance and if they understand the possible resulting dangers. Children are not permitted to play with the device. Cleaning and maintenance should not be carried out by children.
- ▶ The rated sound pressure level is less than 70 dB(A).
- ▶ Disconnect the device from the mains power supply for maintenance and replacement of parts.
 - If the motor is disconnected via a plug connection the operator must be able to control - from any place to which it has access – that the plug is removed.
 - If this is not possible - due to design or installation - the disconnection from the power supply must be ensured via locking in the disconnected position (e.g. isolator).
- ▶ The motor tube can get very hot during prolonged use.
 - When working on the unit, do not touch the tube before it has cooled down.

EN

5. Safety instructions for assembly



ATTENTION: Important safety instructions. Follow all installation instructions, as incorrect installation can lead to serious injuries.

- ▶ When mounting the motor without any mechanical protection of the driven parts and of the tube which may become hot, the motor must be installed at a height of at least 2.5 m above the ground or of another level which provides access to the drive.

- ▶ Before the motor is installed, all cables which are not needed are to be removed and all equipment which is not needed for power-operated actuation is to be put out of operation.
- ▶ The actuating element of a manual release must be mounted at a height of less than 1.8 m.
- ▶ If the motor is controlled by a switch or pushbutton, the switch or pushbutton must be mounted within eyeshot of the motor. The switch or pushbutton must not be located in the vicinity of moving parts. The height of installation must be at least 1.5 m above the floor.
- ▶ Permanently installed control devices must be attached visibly.
- ▶ In case of devices extending horizontally, a horizontal distance of at least 0.4 m must be respected between the fully extended part and any other fixed element.
- ▶ The rated speed and the rated torque of the motor must be compatible with the device.
- ▶ The mounting accessories that are used must be designed in accordance with the selected rated torque.
- ▶ Good technical knowledge and good mechanical skills are necessary for the motor installation. Incorrect installation can lead to serious injury.
Electrical work must be carried out by a qualified electrician in accordance with the regulations in force locally.
- ▶ Only use connecting cables that are suitable with the environmental conditions and which meet the construction requirements. (see accessories catalogue)
- ▶ If the device is not equipped with a connecting cable and a plug, or other means for disconnecting from the mains with a contact opening on each pole according to the conditions of the overvoltage category III for full disconnection, a disconnecting device of this type must be incorporated into the permanently installed electrical installation according to the wiring rules.
- ▶ Do not mount the connecting cables near hot surfaces.
- ▶ A plug for the disconnection of the motor from the power supply must be accessible after installation.
- ▶ Damaged connecting cables must be replaced by GEIGER connecting cables of the same type.
- ▶ The device must be mounted as described in the installation instructions. Fixations shall not be made with adhesives since they are regarded as unreliable.

6. Assembly note

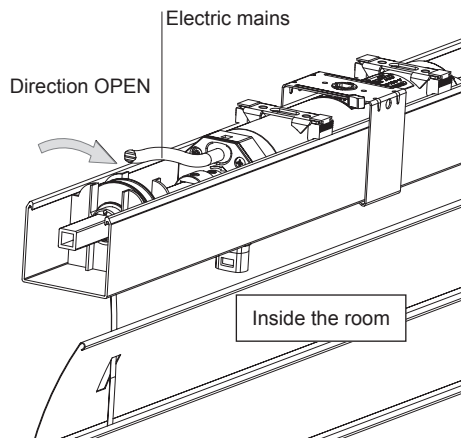
When viewed from inside the room, the power supply connection of the **GJ56.. F03** is located on the left side. The straps are wound on the winding rollers from the outside.

The **GJ56.. F03** must be installed in alignment with the turning bars.

It is important that the **GJ56.. F03** is installed centrally. Please make sure that the load is evenly distributed.

Inclined installation:

The inclined installation is permitted till 45° maximum to level.



7. Installation instructions

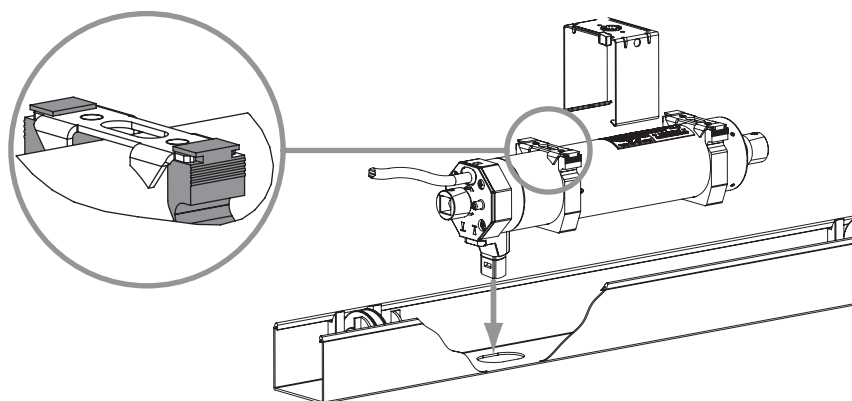
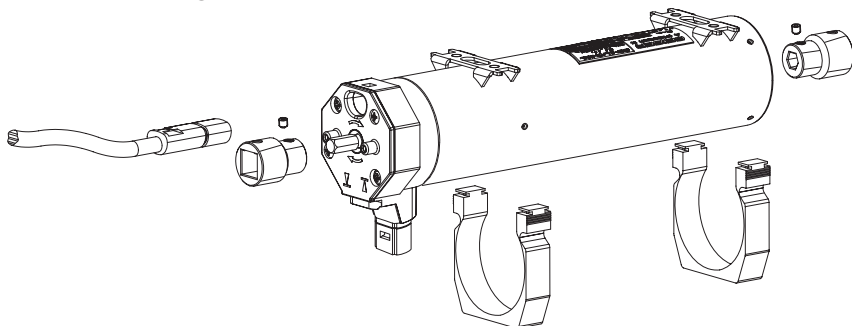


Prior to installation please check to ensure there is no visible damage to the motor like cracks or open cables.

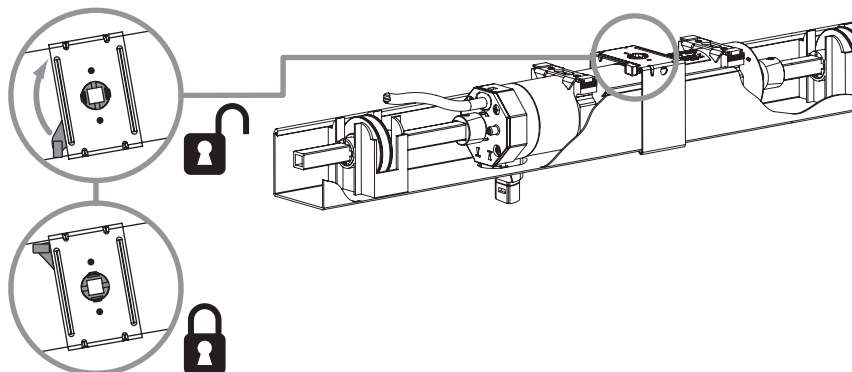


Before fixing please check the strength of the masonry and of the surface.

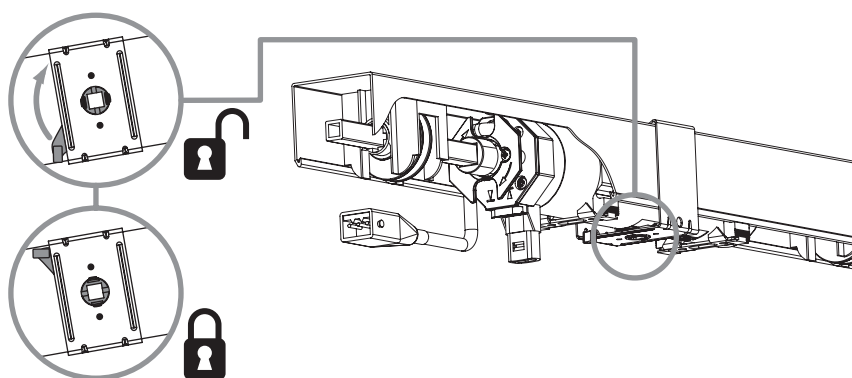
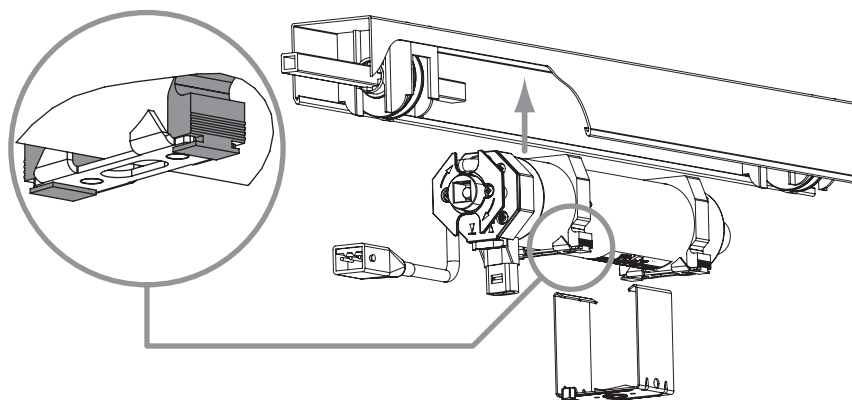
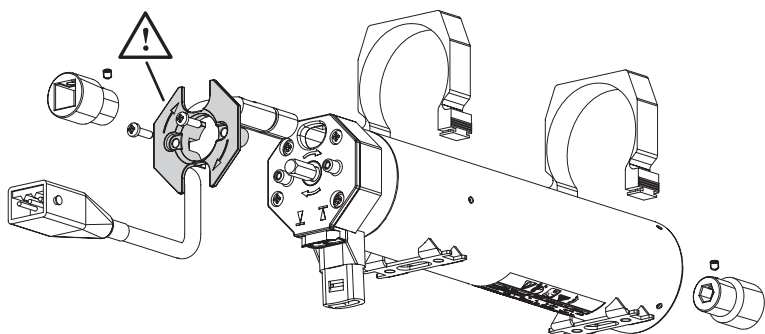
Head rail opening at top:



EN



Head rail opening at bottom:



EN

8. Information for the specialist electrician



The GJ56.. AIR can be connected to the mains supply with either a 4-wire connection cable (Flat4 plug) or with a 5-wire connection cable (Flat5 plug).



Caution: Important installation instructions.
Please follow all instructions since incorrect installation can lead to the destruction of the motor and the switching unit.

General

- The operations with the service clamps may be accomplished only by an electrical specialist.
- Motors with electronic limit stops can be connected in parallel.
- In this case the maximum load of the switching unit must not be exceeded.

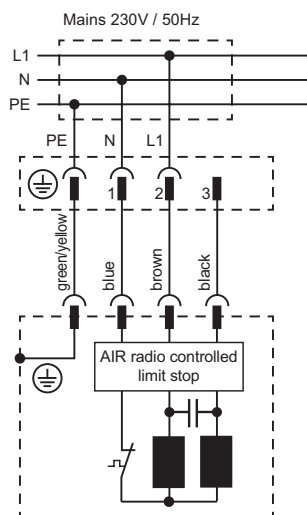
Connection with a 4-wired connecting cable



CAUTION / IMPORTANT NOTE

- The black wire of the connecting cable can be under power.
- The black wire must be fully insulated for touch-safe operations.
- The open end of the black wire must be insulated with an insulated clamp or other insulated material.

- When changing the running direction the switchover must be effected through an off-position.
- When changing the running direction the switchover time must be at least 0.5 s.
- With a three-phase network, please use the same external conductor in order to control the UP and DOWN directions.
- PVC cables are not suitable for equipment used outdoors or exposed to prolonged high levels of UV radiation. These cables should not be used if they are likely to touch metal parts that can heat up to temperatures exceeding 70°C.
- Connecting cables with plug connectors of the Hirschmann Company are tested and approved with couplings of the Hirschmann Company.



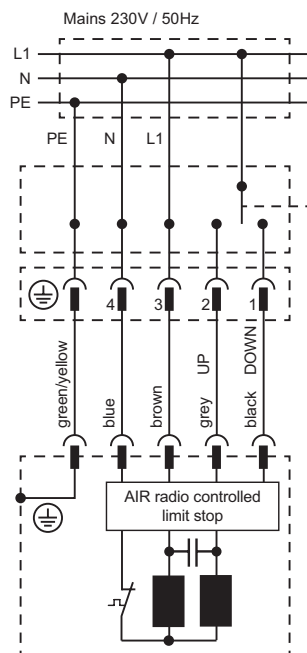
EN

Hirschmann plug connectors	Function	Wire colour
PE contact	PE	green/yellow
Pole 1	N	blue
Pole 2	UP	brown
Pole 3	DOWN	black
Cable designation: 05RR-F 4G 0,75mm ²		

Connection with a 5-wired connecting cable

- When changing the running direction the switchover must be effected through an off-position.
- When changing the running direction the switchover time must be at least 0.5 s.
- With a three-phase network, please use the same external conductor in order to control the UP and DOWN directions.
- PVC cables are not suitable for equipment used outdoors or exposed to prolonged high levels of UV radiation. These cables should not be used if they are likely to touch metal parts that can heat up to temperatures exceeding 70°C.
- Connecting cables with plug connectors of the Hirschmann Company are tested and approved with couplings of the Hirschmann Company.

Hirschmann plug connectors	Function	Wire colour
PE contact	PE	green/yellow
Pole 1	DOWN	black
Pole 2	UP	grey
Pole 3	L	brown
Pole 4	N	blue
Cable designation: 05RR-F 5G 0,75mm ²		



9. Operating mode of the GEIGER GJ56.. AIR

The motor can be operated in three ways.

Individual control: the motor is operated with a handheld or wall transmitter. Alternatively, the motor may be additionally operated with a locked control button. For this purpose, connect the motor with a 5-core connection cable according to the diagram. The adjustment of the end positions is only possible via a handheld or wall transmitter.

Smart Home control: the motor is connected, configured and operated with a Loxone Miniserver or a Loxone Miniserver Go.

A subsequent change between individual control and Smart Home control is possible by repeated teaching in of the motor.

Please find below the commissioning/ operating instructions concerning the individual control with a Loxone Miniserver or Loxone Miniserver Go.

10. Connection to the Loxone Miniserver

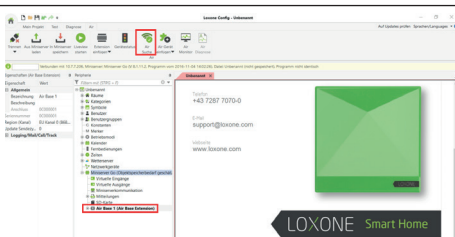
Conditions

In order to integrate the GEIGER GJ56.. AIR in your Loxone system, a Miniserver Go or a Miniserver with Air Base Extension must be operational.

More information under: www.loxone.com/help/miniserver

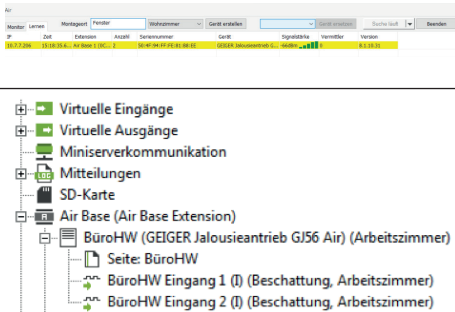
Commissioning in Loxone Config

Open Loxone Config and connect with your Miniserver. Then select the Air Base Extension in the peripheral tree and activate the Air Monitor. Next, click „start search“ in the learning monitor. All Air devices that are in the learning mode are now listed.



Now connect the Venetian blind motor to a power source. To signal a restart, the motor twitches twice and scans the available radio channels until it finds a searching Air Base.

Now mark the GJ56.. AIR , enter a name and assign a room to it. Then, click „create device“.

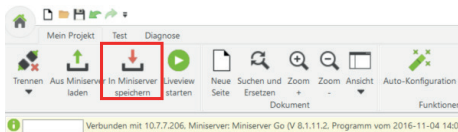


The Venetian blind motor appears under the given designation in the tree. When it is clicked in the tree, it jerks twice.

Select the Venetian blind motor and drag & drop to a programming page.



“Save in Miniserver” transfers the changes made in the Config to the Miniserver.



The motor is now programmed and features the standard configuration as well as a visualization where the upper end position can be easily taught. For more information and documentation please visit www.loxone.com/help/blindmotor-gj56-air

If the end positions have already been programmed with a handheld or wall transmitter they do not need to be taught again.

EN

11. What to do if...

Problem	Solution
Motor does not run.	<ul style="list-style-type: none"> • Motor not plugged in. Please check the plug connection. • Check connecting cable for possible damage. • Check the mains voltage and allow the cause of the voltage breakdown to be tested by a specialist electrician.
Instead of in the downwards direction, motor runs upwards.	<ul style="list-style-type: none"> • End position order was not observed (set first the lower end position)
Motor only runs in one direction.	<ul style="list-style-type: none"> • Motor in the end position. Run motor in the opposite direction. Readjust the end positions, if necessary.
After running several times, the motor breaks down and no longer responds.	<ul style="list-style-type: none"> • The motor became too hot and has switched off. Try it again after a cooling time of about 15 min.
The blind is in the upper position, actuates the limit stop switch and can no longer be moved downwards.	<ul style="list-style-type: none"> • The motor was installed upside down or the lower end position has been overrun and the lift tapes were wound up incorrectly. Allow free mobility of the limit stop switch. Reset the end stops.
The slats are positioned at different angles depending if the intermediate position is approached from the top or from below.	<ul style="list-style-type: none"> • Reset the reference angle of the slats.

12. Declaration of conformity



EU Declaration of Conformity

Gerhard Geiger GmbH & Co. KG
Antriebstechnik
Schleifmühle 6
D-74321 Bietigheim-Bissingen

Product designation:

Venetian blinds motor, motor for rolling shutters, motor for awnings

Type designation:

GJ56..
GR45..
GU45..
GSI56..

Applied directives:

2006/42/EC
2014/30/EU
1999/5/EC
2011/65/EU

Applied standards:

DIN EN 60335-1
DIN EN 60335-2-97
DIN EN 62233
DIN EN 55014-1
DIN EN 55014-2
DIN EN 61000-3-2
DIN EN 61000-3-3
ETSI EN 300 220-2
ETSI EN 301 489-1
ETSI EN 301 489-3

Authorized representative for technical data:

Gerhard Geiger GmbH & Co. KG

Address:

Schleifmühle 6, D-74321 Bietigheim-Bissingen

100WHS18-en-0117

Bietigheim-Bissingen, 02.01.2017


Dr. Marc Natusch (General Manager)

EN

Current declarations of conformity are available under www.geiger.de

13. Technical data

Technical data GJ56.. F03			
	GJ5606k F03	GJ5610 F03	GJ5620 F03
Voltage	230 V~/50 Hz		
Current	0,40 A	0,60 A	0,85 A
Cos Phi ($\cos\varphi$)	> 0,95		
Inrush current (factor)	x 1,2		
Power	93 W	135 W	190 W
Torque	6 Nm	10 Nm	2 x 10 Nm
Speed	26 1/min		
Protection class	IP 54		
Limit switch range	200 r.p.m..		
Operating mode	S2 4 min.	S2 4 min.	S2 4 min.
Length	319,5 mm	329,5 mm	356,7 mm
Diameter	55 mm		
Weight	approx. 1,50 kg	approx. 1,70 kg	approx. 2,20 kg
Ambient temperature / humidity	Operation: T = -10°C .. on request / H max. 90% Storage : T = -15°C .. +70°C / dry and non-condensing place		

Subject to technical modifications



14. Maintenance

The drive is maintenance-free.

15. Notes on waste disposal

Recycling of packaging materials

In the interest of environmental protection, please contact your local government's recycling or solid waste management department to learn more about the services it provides.

Waste disposal of electric and electronic equipment

Electrical and electronic equipment must be collected and disposed of separately in accordance with EU regulations.

EN

For further information and documentation please visit:
www.loxone.com/help/blindmotor-gj56-air

LOXONE

Loxone Electronics GmbH
A-4154 Kollerschlag
www.loxone.com

GEIGER
Antriebstechnik

Gerhard Geiger GmbH & Co. KG
D-74321 Bietigheim-Bissingen
www.geiger.de

