

A photograph of a modern, long, black building with a large glass facade, illuminated from within, set against a dramatic, cloudy sky at dusk. The building is situated on a grassy hill. In the foreground, there is a field of tall grass. A large, stylized 'LOXONE' logo is visible in the middle ground, partially obscured by the building's base. To the right, a smaller, white, modern structure is visible, also illuminated. The overall scene is a promotional image for Loxone Smart Home.

LOXONE Smart Home

Factsheet



Founded	2009
Employees (global)	250+
Export	71%
Turnover 2016	\$50 m
Miniservers Sold	63,000
Smart Homes Installed	60,000
App Downloads	202,770
Partners (global)	10,000
Export Countries	99

(Correct as of January 2017)



Thomas Moser

CEO & Founder
Product Development

“Loxone came about as a result of our own desires for a truly intelligent smart home solution - initially we invented the Miniserver just for ourselves. Today it can be bought by anyone and remains affordable. We only sell what we invent for ourselves, what works for us and the needs of the market.”

Martin Öller

CEO & Founder
Marketing & Sales

“When I first built my own house, it frustrated me that the technology on offer was expensive and complicated. So we made things better. The 360° smart home is an affordable reality for everyone, even those who are renting. Intelligent living is not a question of money anymore.”

Every 30 minutes,
one Loxone Smart
Home goes live.





Loxone Smart Home: Autopilot Living

The Smart Home thinks exactly like I do. At least the one from Loxone does.

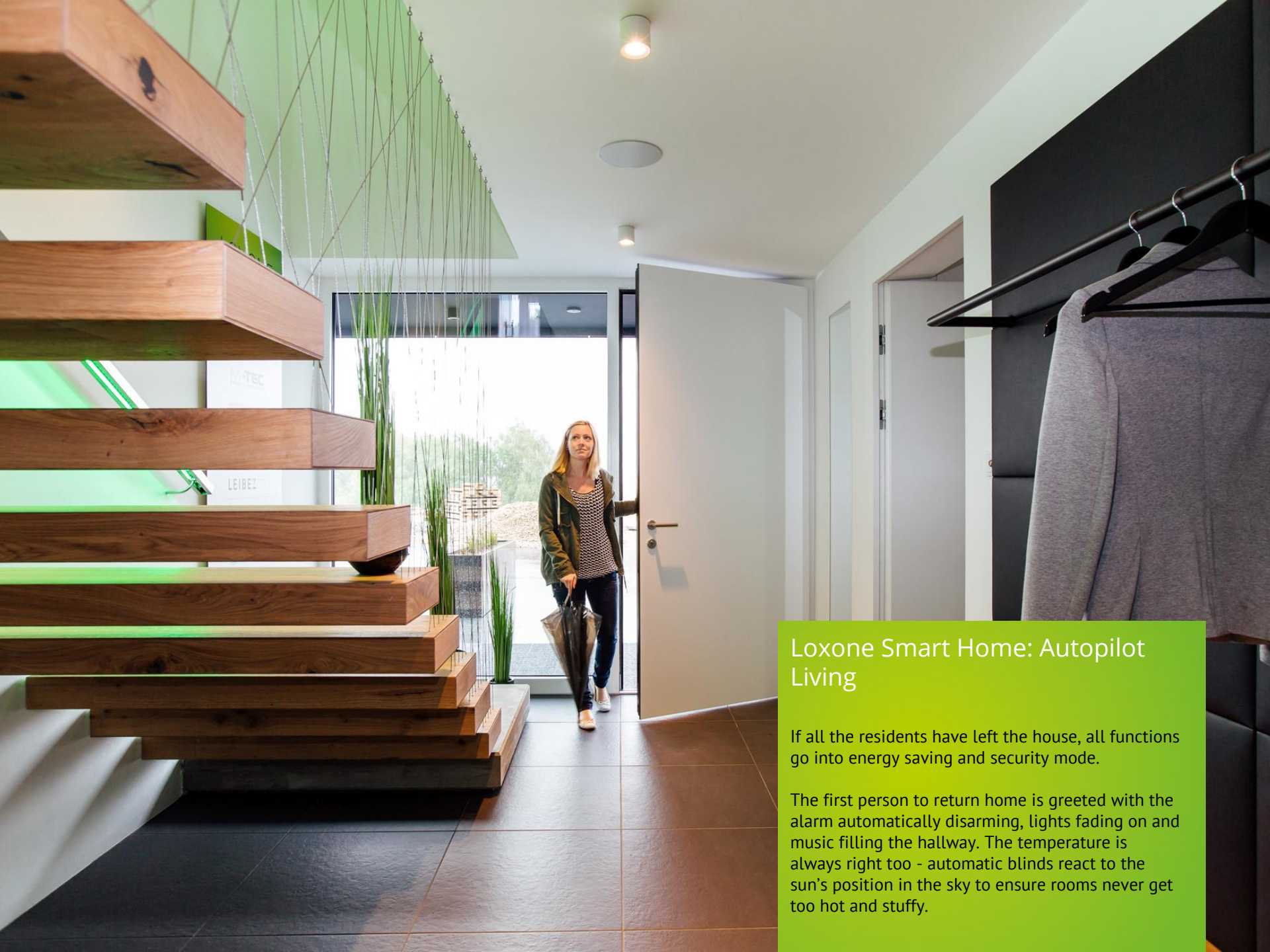
At night when we are asleep it keeps watch over us and will sound an alarm if needed. Total protection and security 24/7.



Loxone Smart Home: Autopilot Living

The Loxone Smart Home knows me and knows what I want. It takes care of things around me when I get up in the morning, come home in the evening or when I want to simply relax.

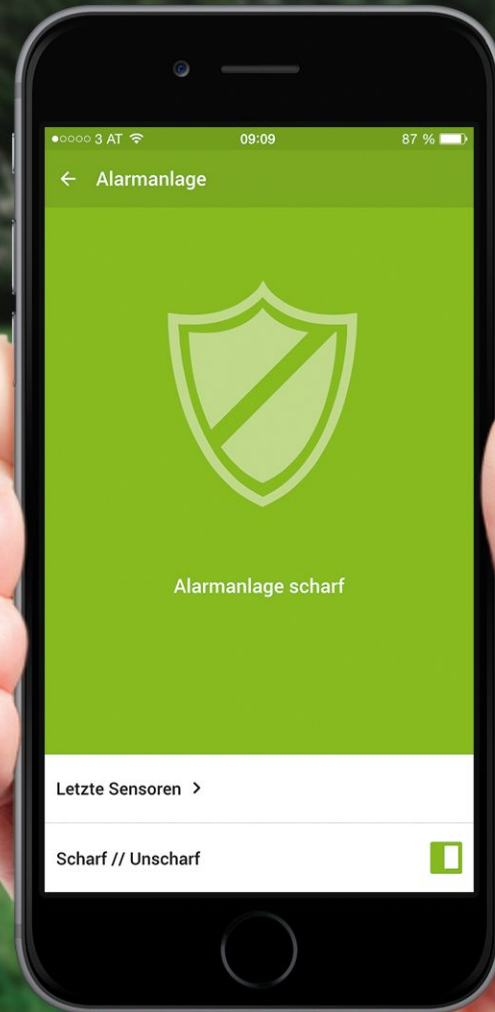
It heats the bathroom, warms the towels and wakes me up with my favorite playlist.



Loxone Smart Home: Autopilot Living

If all the residents have left the house, all functions go into energy saving and security mode.

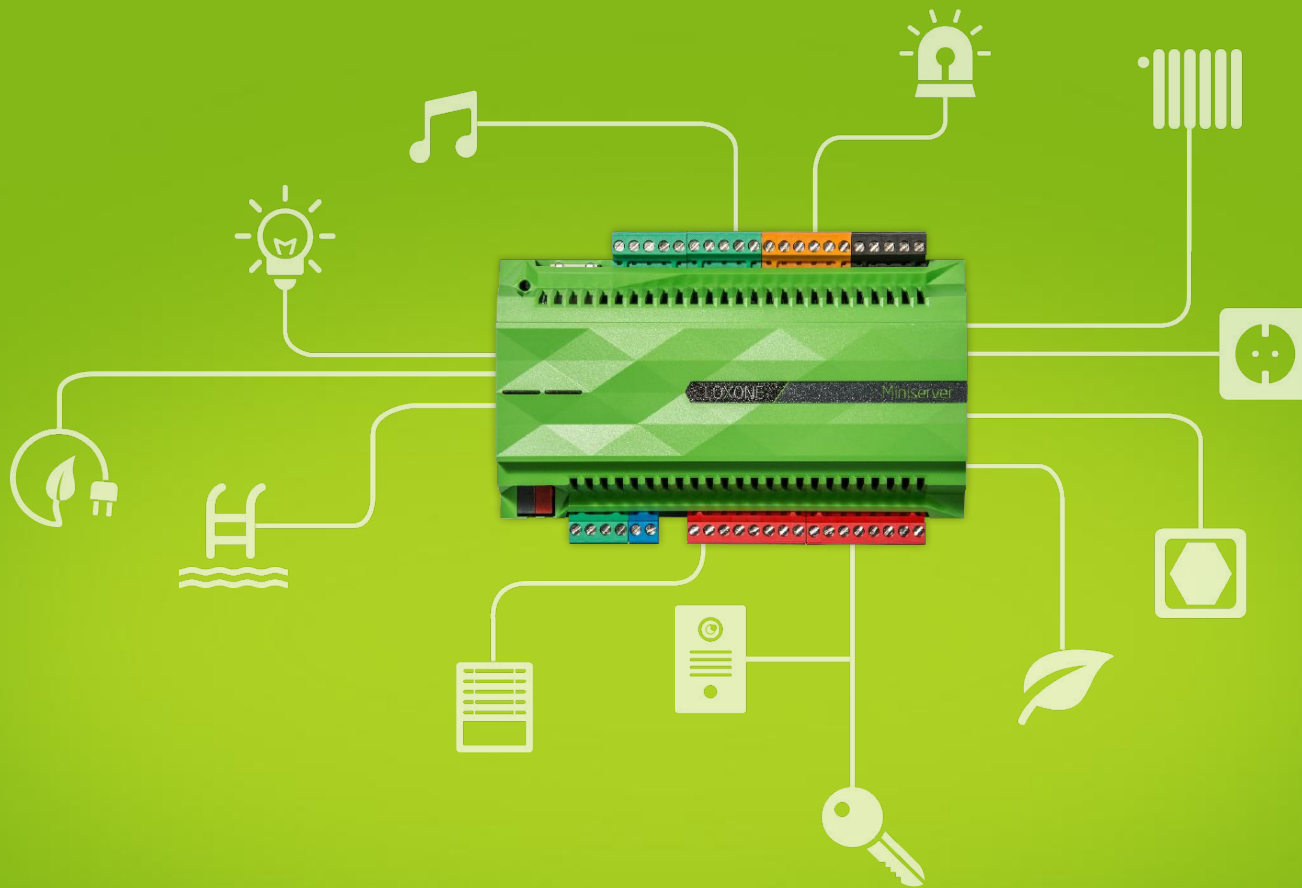
The first person to return home is greeted with the alarm automatically disarming, lights fading on and music filling the hallway. The temperature is always right too - automatic blinds react to the sun's position in the sky to ensure rooms never get too hot and stuffy.



Loxone Smart Home: Autopilot Living

The Loxone Smart Home communicates with me whilst I am away from home and lets me know if I forgot to close the garage door. It then closes it, or I do.

Our Smart Home is the one with the highest IQ. We invented and built it. At first just for ourselves. Now it is also there for you.



Loxone Miniserver

In a Loxone Smart Home, everything is managed from a central nerve center: the Miniserver. From switches and simple sensors to lighting, heating and even complex systems such as solar, everything is brought together centrally. This allows for simpler control and more intelligent automation of your home.

2009

The Story Begins
Thomas Moser began development...



2009

First Headquarters Opened
In an old municipal building in Kollerschlag...



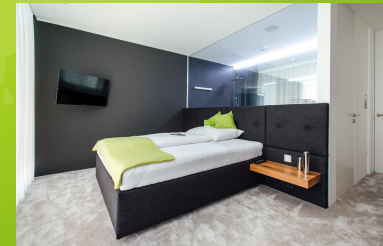
2013

Custom Built Headquarters
Loxone Basecamp



2016

Europe's First Live-In Smart Show Home
Opened June 2016





Lexington, US

Philadelphia, US

Reading, UK

Paris, FR

Nijlen, BENELUX

Steckborn, CH

Neumarkt, IT

Artés, ES

Budweis, CZ

Kollerschlag, AT

Contact



John Wechsler
Marketing

john.wechsler@loxone.com
+1 859 554 3147



<http://www.loxone.com/press>



<http://loxone.com/blog>



<http://www.youtube.com/user/LoxoneVideoENU>



<http://www.facebook.com/LoxoneUS>



<http://twitter.com/LoxoneUS>