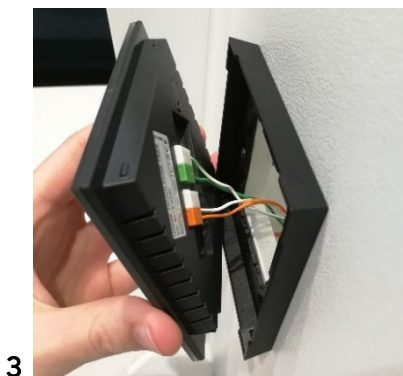
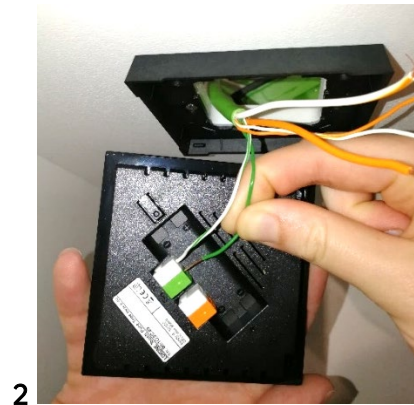
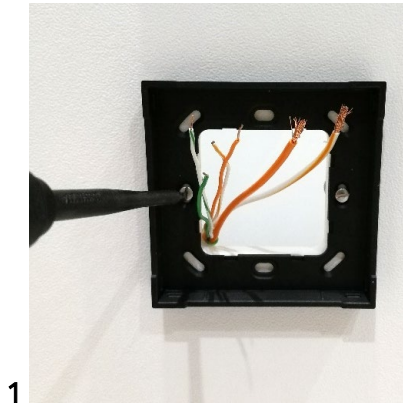


Inbetriebnahme und Montageanleitung

Touch Pure Tree

Art. Nr.: 100396, 100398



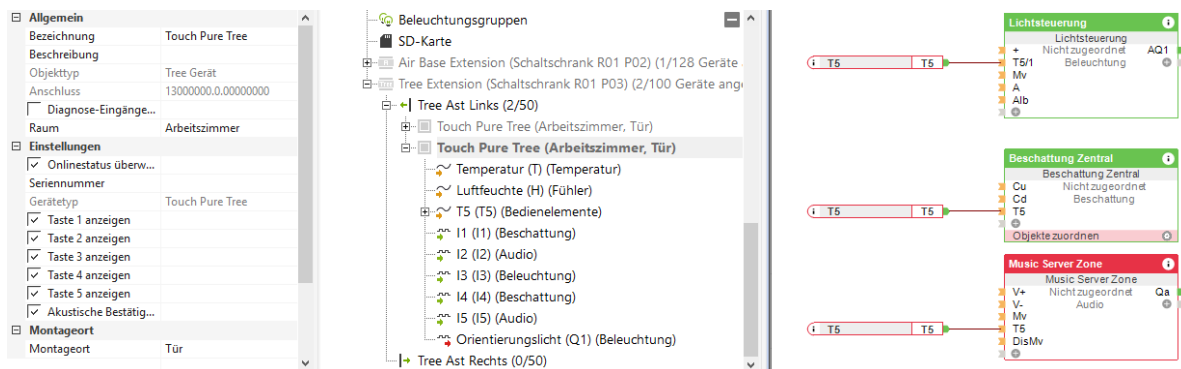
Touch Pure Tree in Loxone Smart Home integrieren:

01 | Loxone Tree Gerät einlernen:

loxone.com/help/treedevice

02 | Loxone Config:

Mit F5 den gewünschten Baustein anlegen. Aus dem Peripheriebaum "Touch Pure Tree" die jeweiligen Elemente in die Loxone Config ziehen.



04 | Funktionsbeschreibung

<https://loxone.com/help/touch-pure-tree>

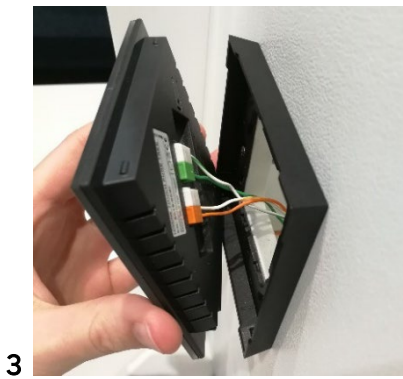
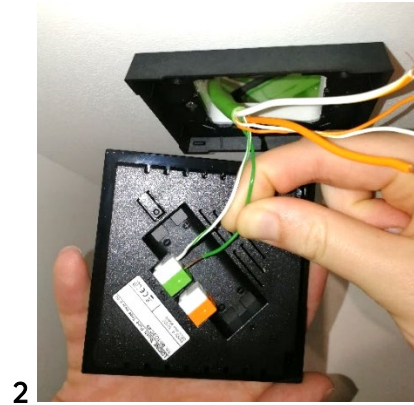
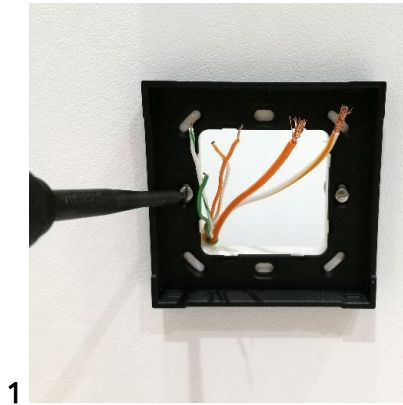
Veröffentlicht von

Loxone Electronics GmbH
Smart Home 1
4154 Kollerschlag
Austria
Tel: +43 7287 7070-0
loxone.com

Pairing and installation instructions

Touch Pure Tree

Part No.: 100396, 100398



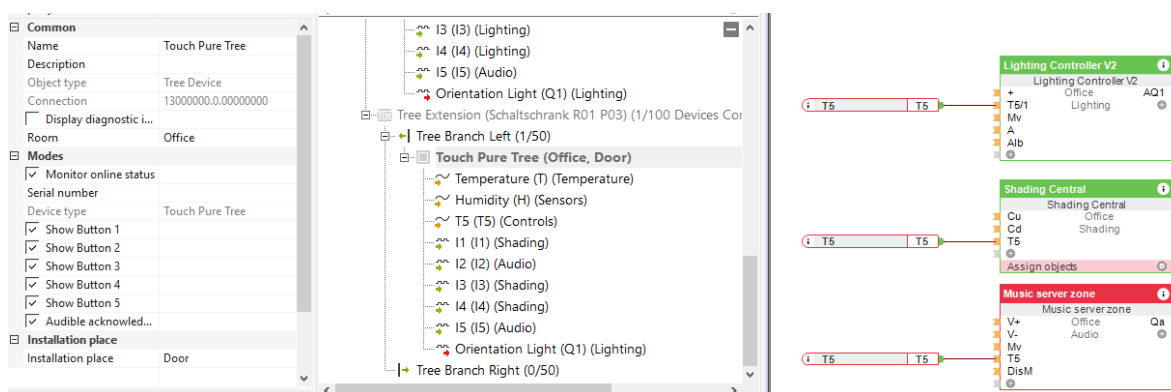
Integrate the Touch Pure Tree into your Loxone Smart Home:

01 | Pair Loxone Tree device:

loxone.com/help/treedevice

02 | Loxone Config:

Add the relevant module with F5. Nested beneath the Touch Pure Tree, click and drag the respective item from the periphery tree across to the relevant page within Loxone Config



04 | Description of function

<https://loxone.com/help/touch-pure-tree>

Published by

Loxone Electronics GmbH
Smart Home 1
4154 Kollerschlag
Austria
Tel: +43 7287 7070-0
loxone.com